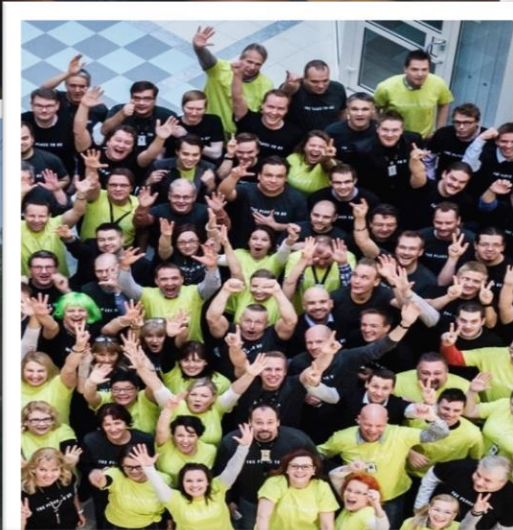




TOGETHER
WE MAKE DIGITAL
WORLD CHANGES

Kim Roedkjaer - Director
Biometrics



ATERA

TP2B

The Place to Be

1st

largest in Nordic region

2nd

largest in Europe

21%

share of market in DK

+6,800

*full-time employees
+1,557 in Denmark*

+4,000

*service consultants
+1,000 in Denmark*

+7,500

*technology certifications
+2.500 in Denmark*

27,500

customers public & private

89

*offices
6 in Denmark*

+130

countries delivered to

28

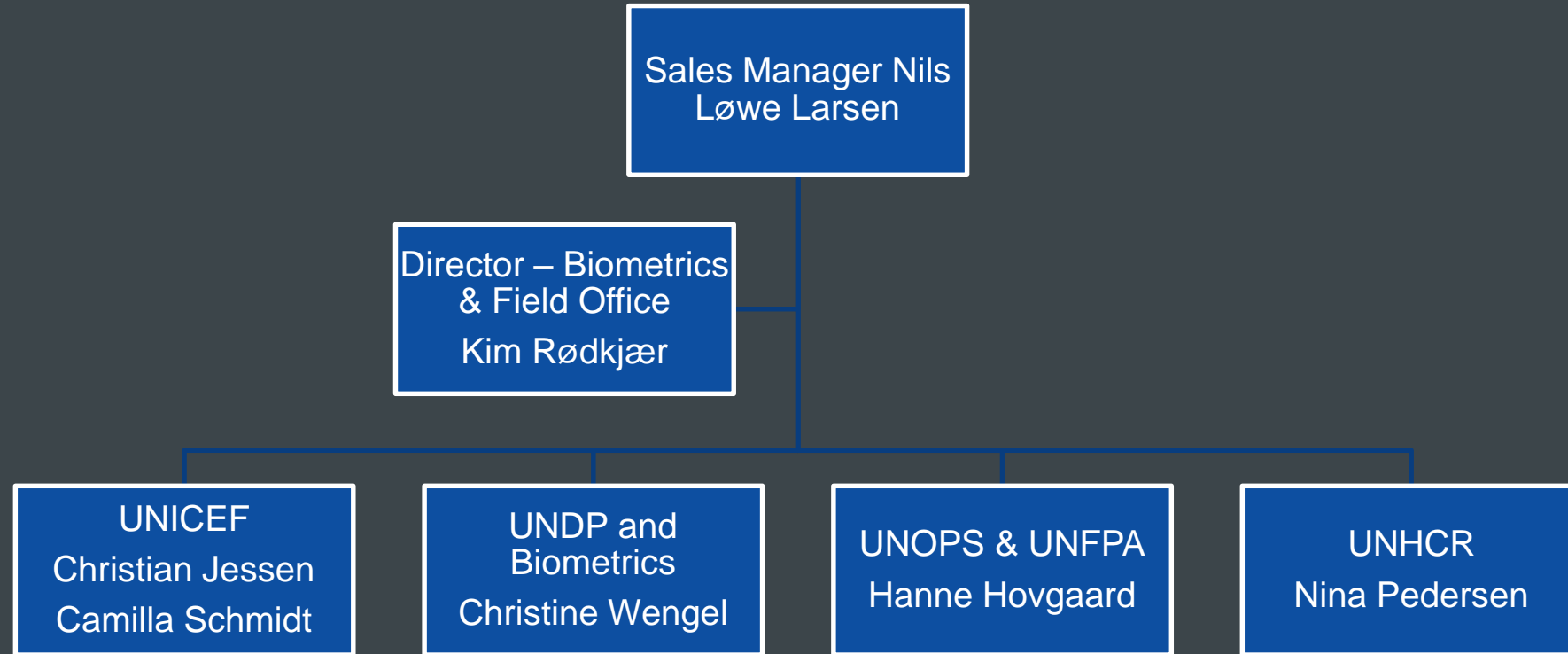
*NOK billion revenue
6,4 billion in DK (DKK)*

**WE BUILD
THE FUTURE
WITH IT.**

Atea long term agreements with UN

Agency	Long Term Agreement
UNICEF	IT Products clients, servers etc.
UNICEF	Xerox Photo copiers
UNHCR	IT Products clients and servers
UNHCR	Toners
UNHCR	Biometric Hardware
UNDP	IT Products
UNDP	Cisco Networking
UNFPA	IT Products clients and servers
WHO	Lenovo Notebooks
UNOPS	Cisco Networking

Our dedicated Field IT Team



We started the next digital revolution to public services and health in Africa, when we turn the phone into a digital id card - Removing the physical barriers and the endless queues.



Kim Rødkjær | Director Identity and Field Office
Atea A/S | Lautrupvang 6 | 2750 Ballerup | Denmark
+45 60946095 | kim.rodkaer@atea.dk | www.atea.dk

ATEA

PUBLIC SERVICES – TODAY



#1 Mobile communication dominates

Digital mobile services with seamless connectivity is the future.

The relationship between humans and machines will go from just being a technical instrument to perfect symbiosis

The mobile phone becomes a wallet of opportunities and key to future payment.

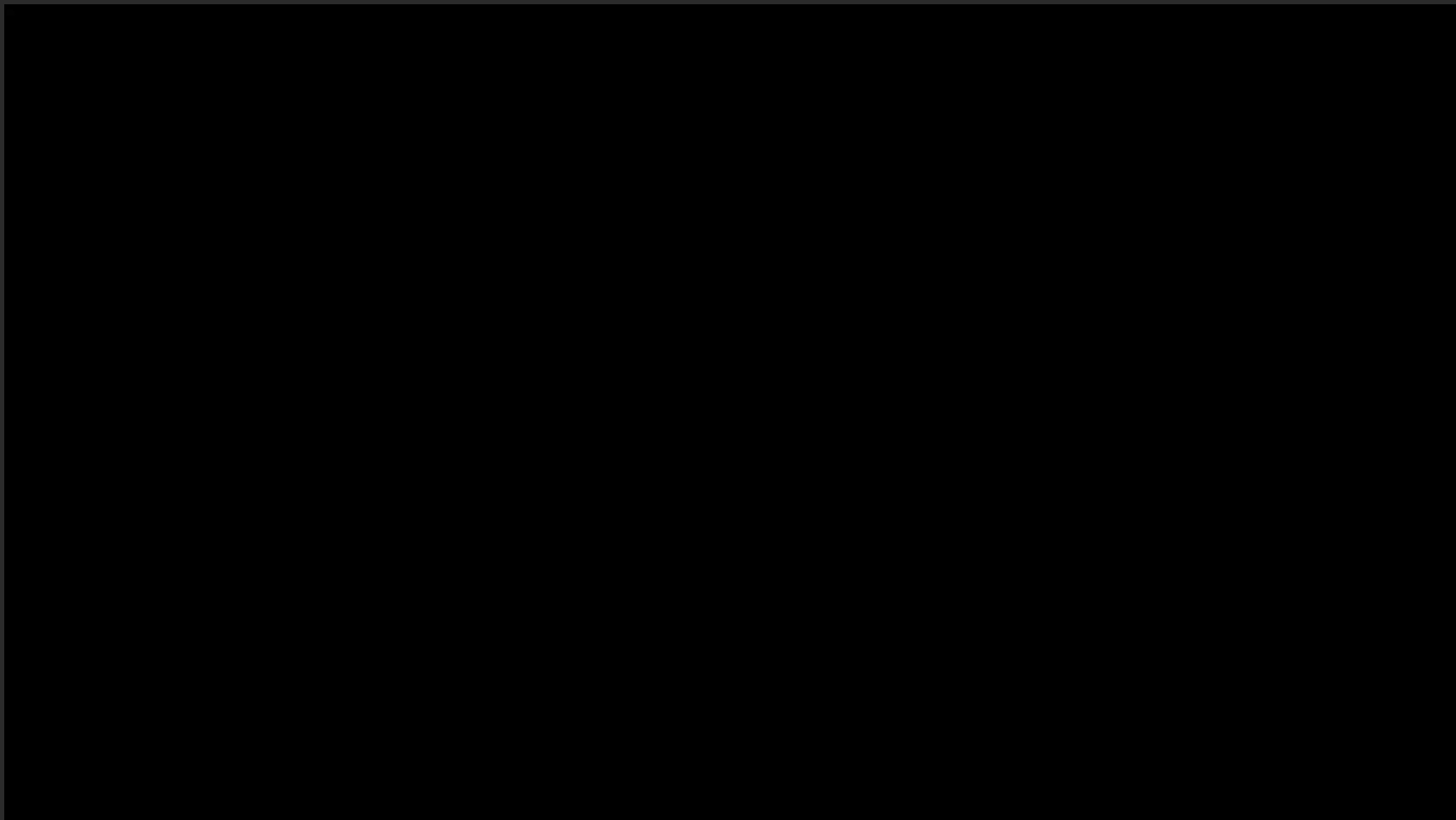


IDENTITY INTO THE CLOUD – JACK IS THE PASSWORD

With Identity X the phone becomes the biometric secure key to a new world of cloud based services and accessed by a “selphy” snapshot



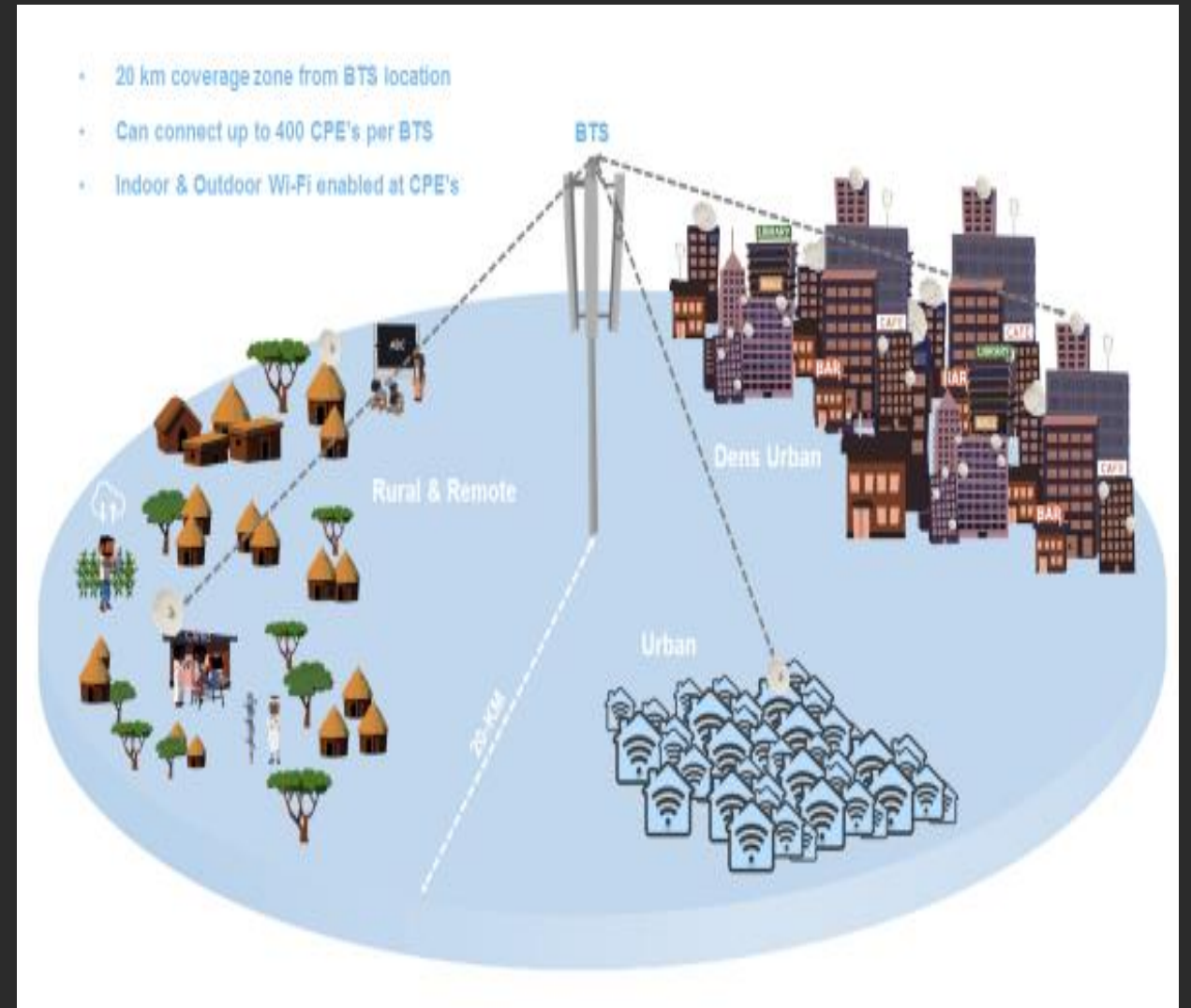
MEET JACK



LAST MILE FAST AND CHEAP INTERNET

Now internet access becomes available to rural areas at a fraction of the costs of any previous technology.

- Un-licensed network
- 1 station covering 20km radius
- 400 wi-fi access points



STAYING POWERED UP – 24/7

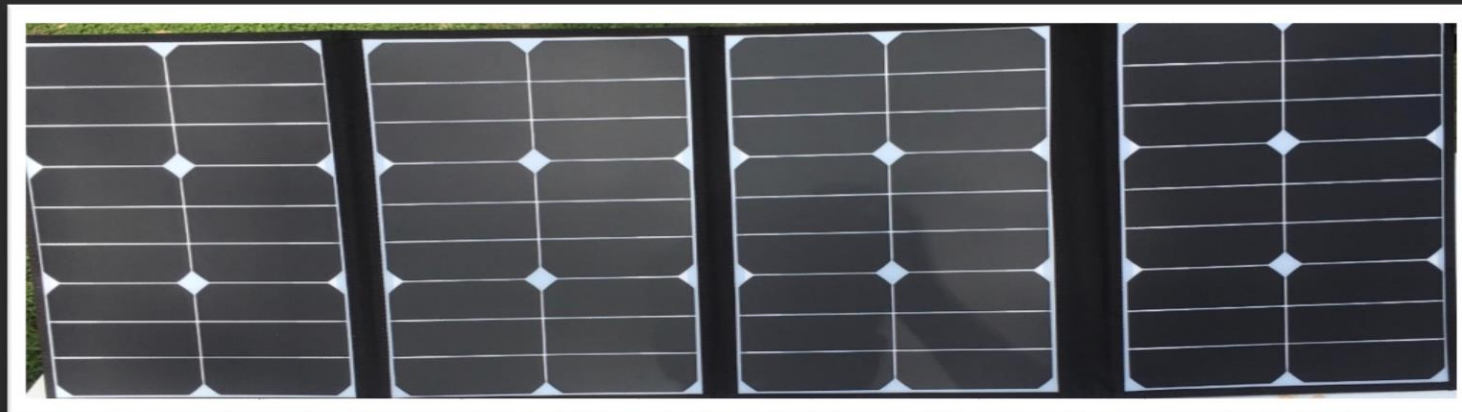
- Battery Type: Li-ion Battery
- Capacity: 34.2 or 52800mAh
- Input: DC 15-24V/2A
- Output: DC 9V/12V/16V/19V/20V 4A(Max)
- Dual USB 5v, 3A (total across both ports)
- Dimension: 8.45x3.17x2.22 inches
- Weight: 1.4 KG

IT JUMP STARTS A CAR



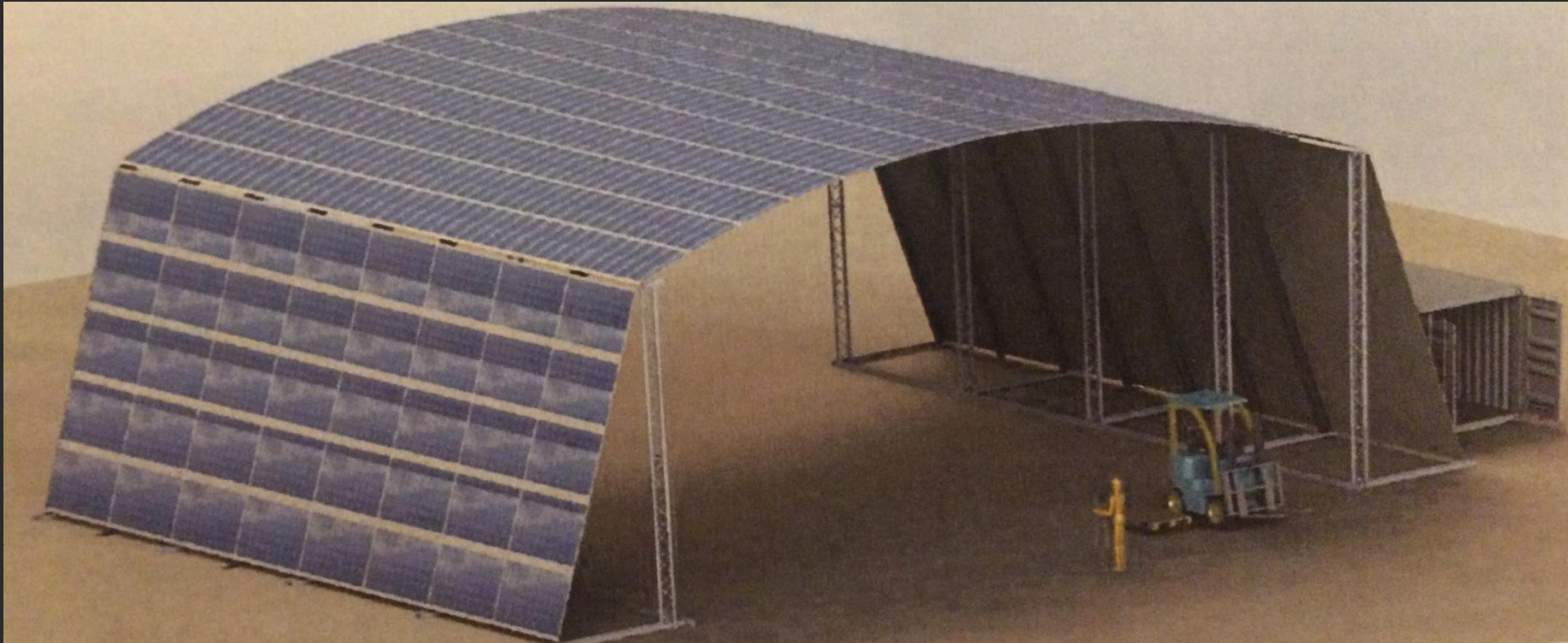
24/7 OFF GRID POWER KITS

SOFT SOLAR CHARGER KIT – CHARGES ATEA POWER BANKS DIRECTLY IN A DAY OR KEEP THE SYSTEM RUNNING FROM THE SUN INCL. 12 M POWER CABLE



THE SOFT SOLAR REVOLUTION

- ATEA SOFTPANEL CAMP SOLAR – OFFICE POWER PACK
- ULTRA LIGHT JUST 3KG / M2 70% WEIGHT REDUCTION
- KEEPS YOU SERVERS, FRIDGES AND AC RUNNING 24/7
- 30.000 WATT – 220V / 440 V POWER
- BATTERY UPS BUILD IN – OPTIONAL GENERATOR BACK UP.
- ARRIVES IN A 20" CONTAINER – READY TO RUN IN A SINGLE DAY



BIG ENOUGH TO DARE SMALL ENOUGH TO CARE



Kim Rødkjær | Director Identity and Field Office
Atea A/S | Lautrupvang 6 | 2750 Ballerup | Denmark
+ 45 60946095 | kim.rodkjaer@atea.dk | www.atea.dk