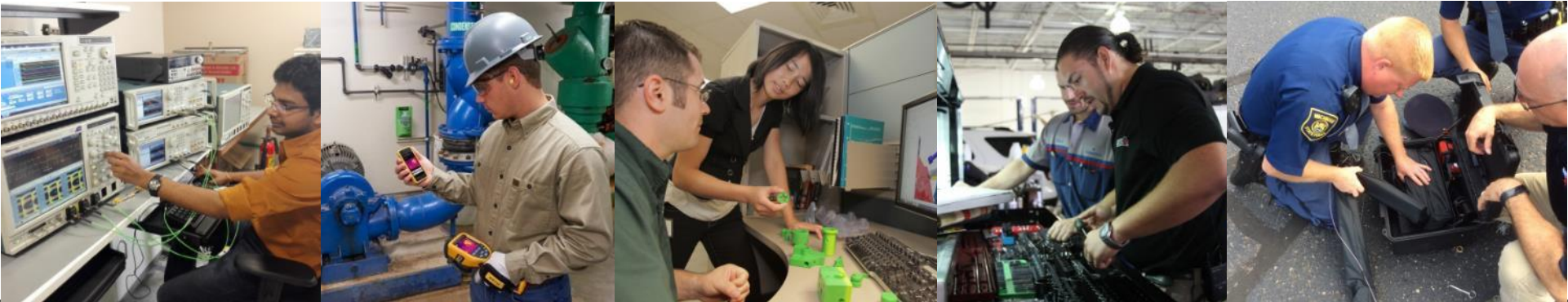


Strong Company Fundamentals - Part of the Fortive Family

A spin off of Danaher Corporation (NYSE: FTV)

Essential technology for the people who create, implement and accelerate progress.

- \$6.2B revenue
- 24,000+ global employees
- Teletrac Navman sits in the Transportation Technologies sector of a \$3.2B business unit





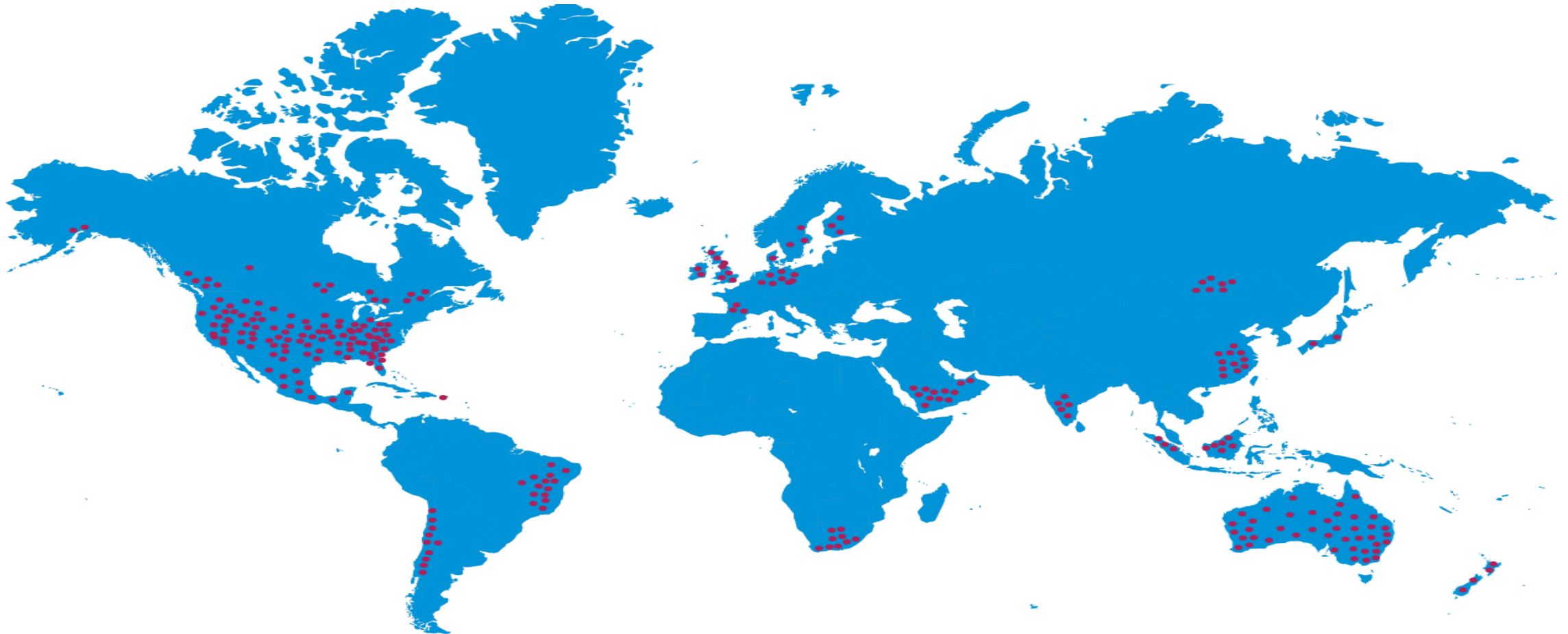
Worldwide NGO Regions

South America Oceania Western Africa Central America Eastern Africa Northern Africa Middle Africa Southern Africa Northern America
Caribbean Eastern Asia South-Eastern Asia Southern Europe South-Central Asia Western Asia Eastern Europe Northern Europe
Western Europe



WE ARE WHERE YOU GO!

TELETRACNAVMAN



**Powering 40,000 businesses and
500,000 vehicles across six continents**

- > A Fortive Company
- > Top 5 Global Leader
- > 820+ Associates
- > 100+ R&D Engineers

Bi-Product: Hidden Opportunities, Operational Success

Reduce Fuel Consumption



30%

Reduce maintenance events



12%

Improve Uptime



15%

Save on ensuring compliance
and increasing productivity



30%

Reduce accidents
and violations



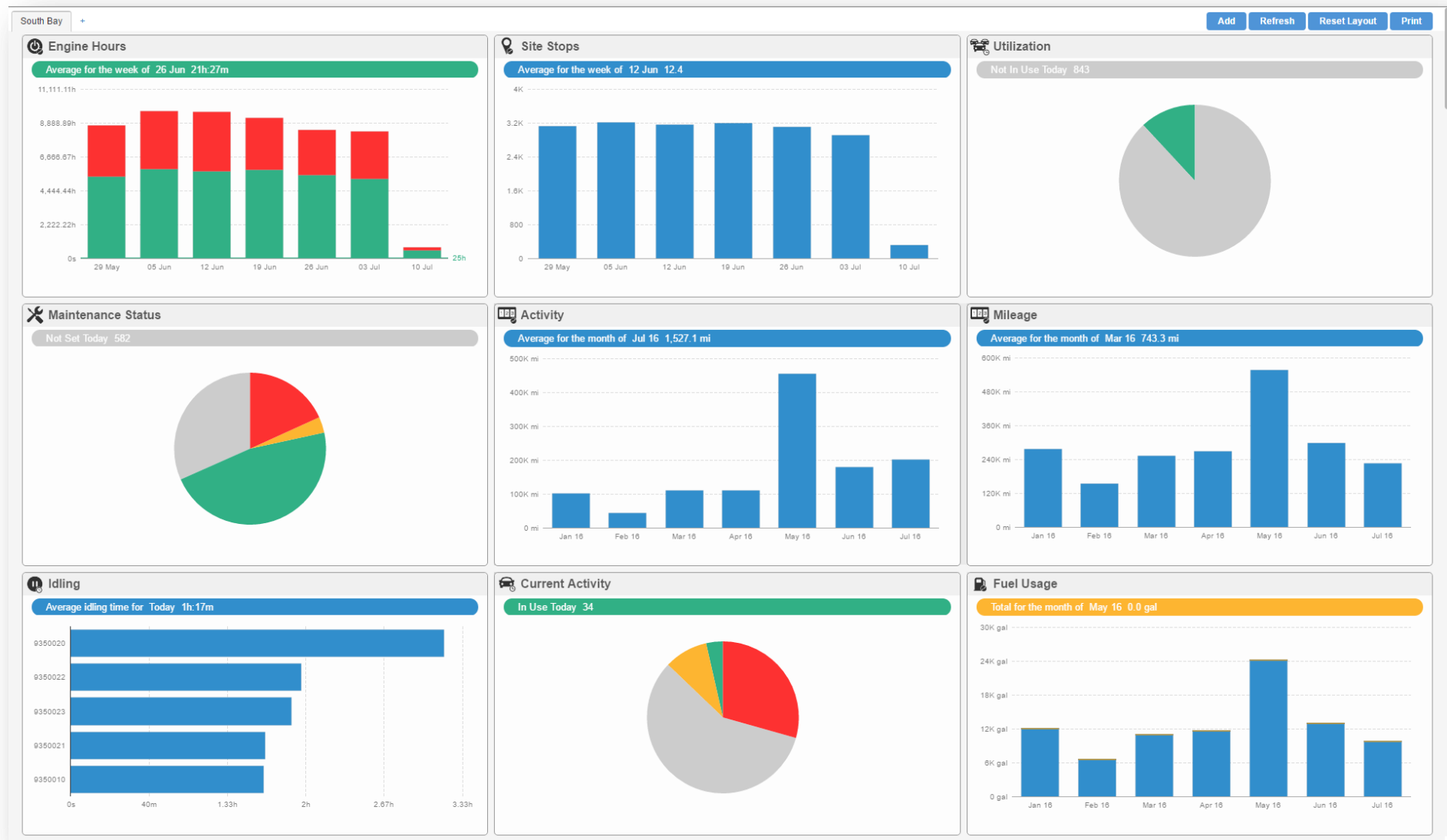
20%

*Results from a recent survey across Teletrac Navman supported fleets using Fleet Director and Online AVL2

Fully Integrated Solution

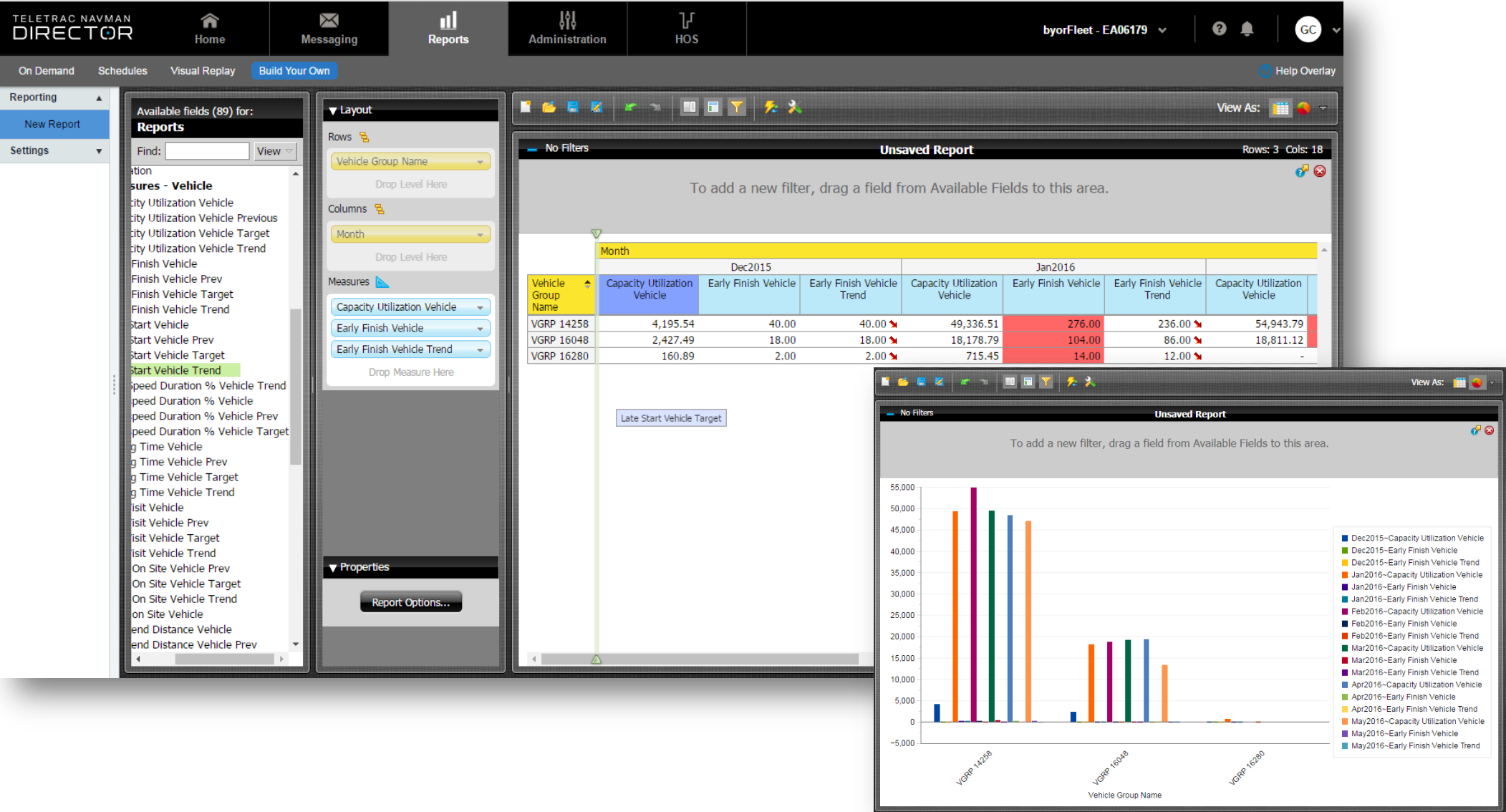


Data Visualization



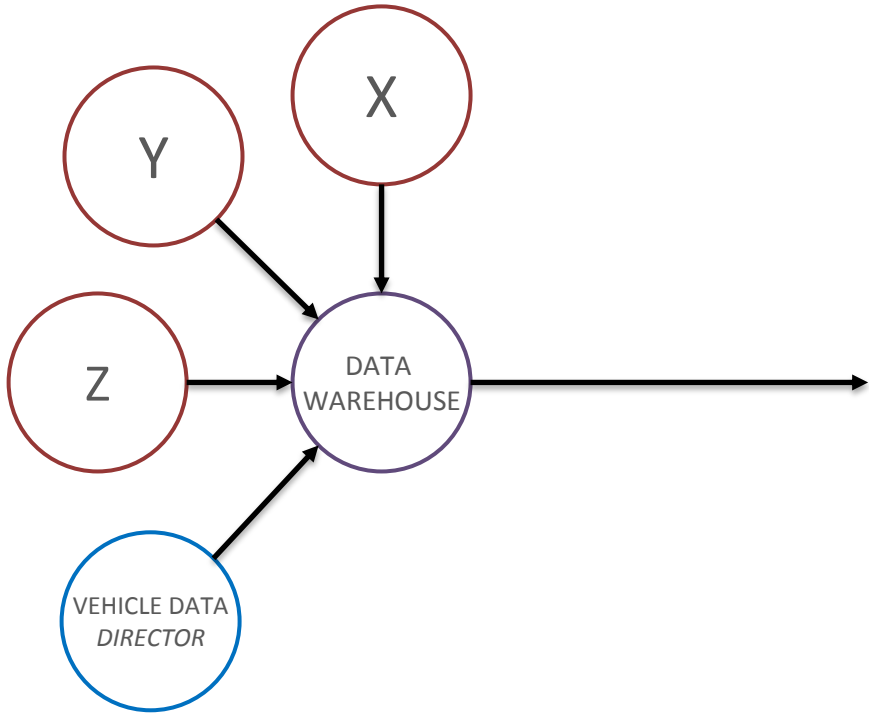
On demand reports and dashboards for managing asset utilization to maximize productivity.

Build Your Own Reports

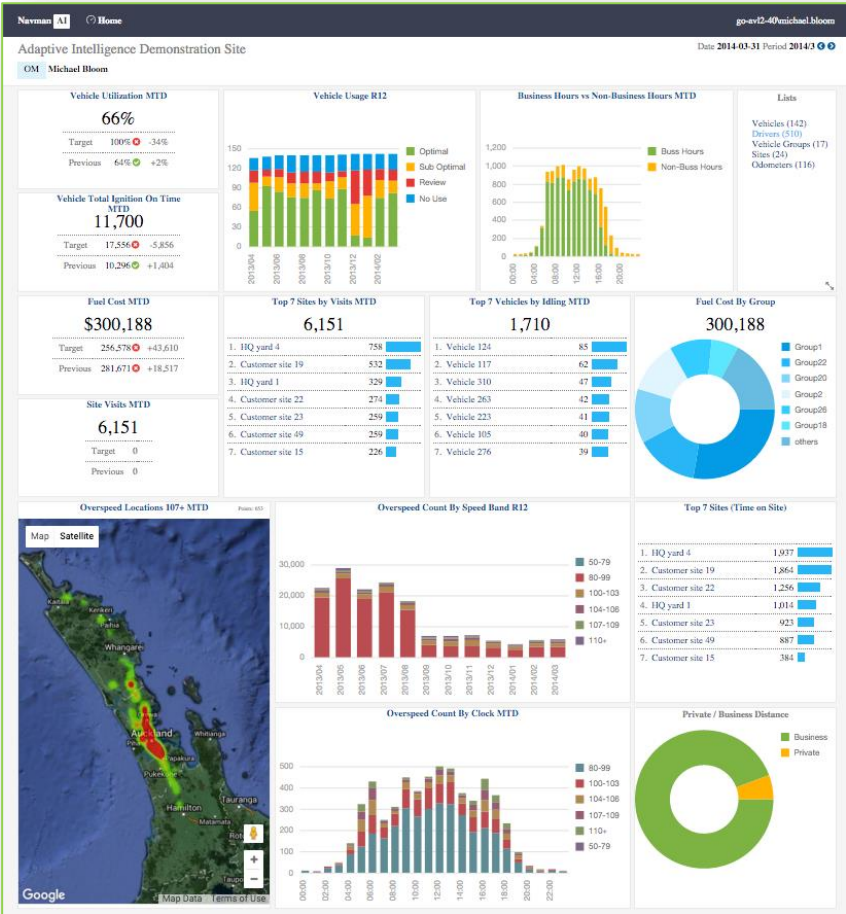


Data Integrations

Combine location, speed and activity-based information combined with existing primary systems



Adaptive Intelligence brings all data from Director “A” and other systems of your choice “XYZ” into a data warehouse “B” which processes and pushes it into a dashboard “C” for your use.



Adaptive Intelligence

Provide's Continuous Security Monitoring To Protect Your Data – Teletrac Navman Has Over 1 MM Invested

