



HHS emPOWER INITIATIVE OVERVIEW

Kristen P. Finne

Program Manager, HHS emPOWER Initiative

Senior Policy Analyst, Division of Health Systems Policy

Office of the Assistant Secretary for Preparedness and Response

August 25, 2017

Community-Based Healthcare Dependency in Disasters

Ensuring Continuity of Care, Mitigating Surge and Improving Outcomes

- How many community-based at-risk populations rely on electricity-dependent medical equipment, devices and the healthcare system- daily, weekly, monthly, etc?
- How can we ensure continuity of care and improve outcomes for community-based at-risk populations?
- How we can better anticipate and mitigate disaster-induced surge and stress on the healthcare system?
- How can we integrate and support their needs across the entire spectrum of emergency preparedness, response and recovery?



HHS emPOWER National Program

Right Data, Right Tool, Right Person, Right Time

HHS.gov U.S. Department of Health & Human Services HHS.GOV

HHS emPOWER Map 2.0

Over 2.5 million Medicare beneficiaries rely upon electricity-dependent medical and assistive equipment, such as ventilators and wheel chairs, and cardiac devices in our communities. Severe weather and disasters that cause power outages can be life threatening for these individuals.

How can we empower community and electricity-dependent Medicare beneficiary health resilience?

Every hospital, first responder, electric company, and community member can use the map to find the monthly total of Medicare beneficiaries with electricity-dependent equipment claims at the U.S. state, territory, county, and zip code level and turn on "real-time" natural hazard and NOAA severe weather tracking services to identify areas and populations that may be impacted and are at risk for prolonged power outages.

Together, we can all develop emergency plans and response activities for the whole community and assist our at-risk community members prior to, during and after an emergency.

Select map attributes to display data

NATURAL HAZARDS
 Select Natural Hazard

REGION FOR HEALTH DATA
 Select State/Territory

Select Country: US

Select ZIP Code

MAP STYLE
 Select Basemap

Power Map

display data

NATURAL HAZARDS
 Select Natural Hazard

REGION FOR DATA
 Select State/Territory

Select County

Select ZIP Code

MAP STYLE
 Select Basemap

Power Map

Medicare Data Totals

Geographical Area: Full US

Beneficiaries: 7,832

Electricity-Dependent Beneficiaries: 632

Electricity-Dependent State

0 0 - 250
 250 - 500
 500 - 750

Natural Hazard Legend

0 0 - 250
 250 - 500
 500 - 750

0 0 - 250
 250 - 500
 500 - 750

0 0 - 250
 250 - 500
 500 - 750

State, Territory, MMA HHS emPOWER Emergency Planning (De-identified) Datasets & Rest Services

State/Territory	Beneficiaries	Electricity-Dependent Beneficiaries	Rest Services
AK	100	100	100
AL	100	100	100
AR	100	100	100
AS	100	100	100
AZ	100	100	100
CA	100	100	100
CO	100	100	100
CT	100	100	100
DC	100	100	100
DE	100	100	100
FL	100	100	100
GA	100	100	100
HI	100	100	100
IA	100	100	100
ID	100	100	100
IL	100	100	100
IN	100	100	100
KS	100	100	100
KY	100	100	100
LA	100	100	100
MA	100	100	100
MD	100	100	100
ME	100	100	100
MI	100	100	100
MN	100	100	100
MO	100	100	100
MS	100	100	100
MT	100	100	100
NC	100	100	100
ND	100	100	100
NH	100	100	100
NJ	100	100	100
NM	100	100	100
NV	100	100	100
NY	100	100	100
OH	100	100	100
OK	100	100	100
OR	100	100	100
PA	100	100	100
RI	100	100	100
SC	100	100	100
SD	100	100	100
TN	100	100	100
TX	100	100	100
UT	100	100	100
VA	100	100	100
VT	100	100	100
WA	100	100	100
WI	100	100	100
WV	100	100	100
WY	100	100	100

Hurricane Matthew Electricity-Dependent DME & Power Outages

GeoHEALTH PLATFORM
 A U.S. Department of Health & Human Services

EM Emergency Management Portal

Public Health Authority HHS emPOWER Response Outreach (Individual) Datasets

State/Territory	Beneficiaries	Electricity-Dependent Beneficiaries	Rest Services
AK	100	100	100
AL	100	100	100
AR	100	100	100
AS	100	100	100
AZ	100	100	100
CA	100	100	100
CO	100	100	100
CT	100	100	100
DC	100	100	100
DE	100	100	100
FL	100	100	100
GA	100	100	100
HI	100	100	100
IA	100	100	100
ID	100	100	100
IL	100	100	100
IN	100	100	100
KS	100	100	100
KY	100	100	100
LA	100	100	100
MA	100	100	100
MD	100	100	100
ME	100	100	100
MI	100	100	100
MN	100	100	100
MO	100	100	100
MS	100	100	100
MT	100	100	100
NC	100	100	100
ND	100	100	100
NH	100	100	100
NJ	100	100	100
NM	100	100	100
NV	100	100	100
NY	100	100	100
OH	100	100	100
OK	100	100	100
OR	100	100	100
PA	100	100	100
RI	100	100	100
SC	100	100	100
SD	100	100	100
TN	100	100	100
TX	100	100	100
UT	100	100	100
VA	100	100	100
VT	100	100	100
WA	100	100	100
WI	100	100	100
WV	100	100	100
WY	100	100	100

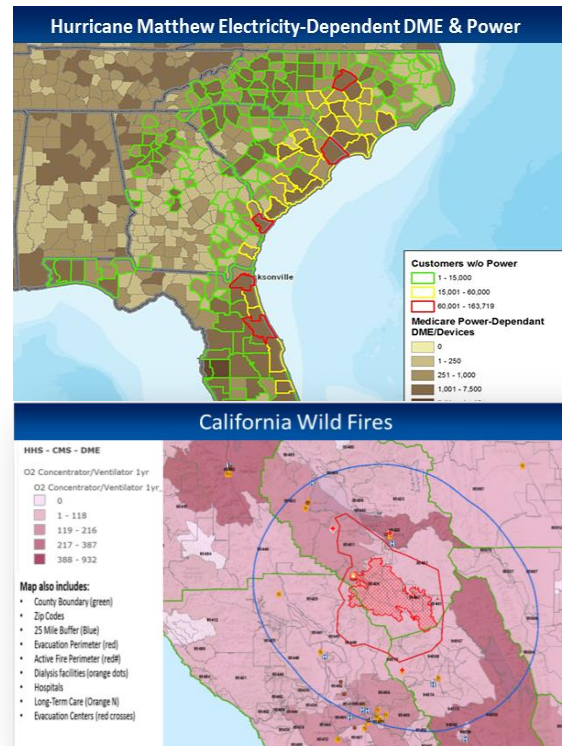


Resilient People. Healthy Communities. A Nation Prepared.

emPOWERing State & Local Preparedness & Response Decision Making

Readily Meaningful, Consumable and Actionable De-Identified Information

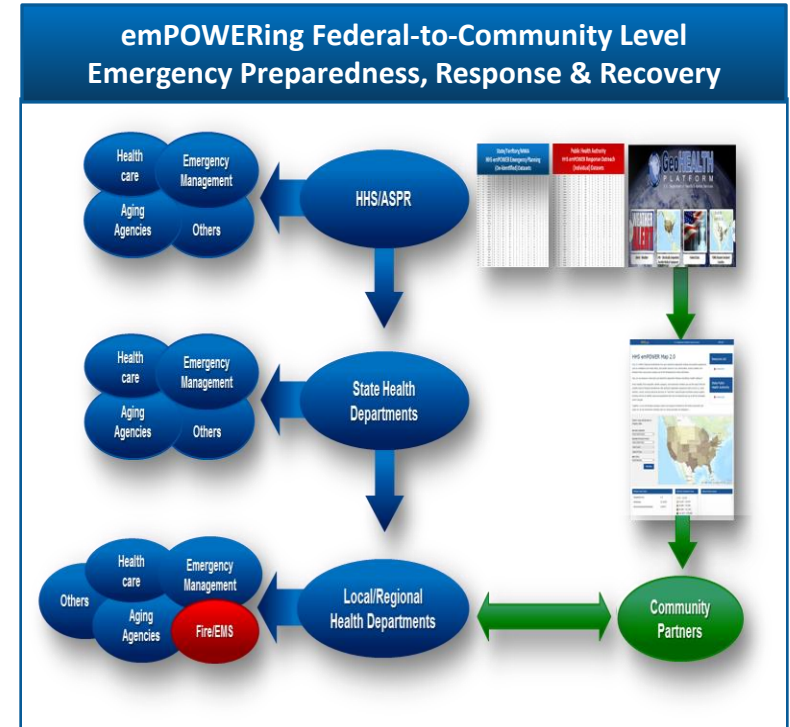
- **Provides states and locals with more granular de-identified data:**
 - Medicare totals by type of DME, device and healthcare service
- **Sample Use Cases:**
 - Identifying optimal locations, support, and power needs for general population shelters
 - Assessing transportation needs for evacuating or transport to healthcare providers (e.g. dialysis)
 - Informing power restoration prioritization decisions
 - Anticipating potential EMAC requests for at-risk populations residing by borders
 - Recruiting MRC members that can respond and support healthcare dependent populations
 - Setting the stage for life-saving assistance



HHS emPOWER Initiative

Improving Healthcare Dependent Needs Integration and Coordination Across All Systems for Emergency Preparedness, Response and Recovery

- **Building Cross Sector Partnerships & System Integration for Healthcare Dependent Populations**
- **Emergency Preparedness:**
 - Population-Based Situational Awareness
 - Emergency Planning Activities & Plans
 - Develop Systems, Processes & Triggers
 - Identify Resources for Scenarios
 - Sets Stage for Life-Saving Outreach
- **Emergency Response:**
 - Activate Emergency Plans
 - Deploy Emergency Response Assets
 - Activate Communications Network
- **Recovery:**
 - FEMA Individual Assistance Program Planning
 - Reconstitution of Healthcare/ Survivor Continuity of Care



Resilient People. Healthy Communities. A Nation Prepared.

Contact Information

HHS emPOWER Initiative Contact:

Kristen P. Finne

Program Manager, HHS emPOWER Initiative
Senior Policy Analyst, Division of Health Systems Policy
Office of the Assistant Secretary for Preparedness and Response
U.S. Department of Health and Human Services

Office Email: kristen.finne@hhs.gov

NEW! HHS emPOWER Map 2.0: <https://empowermap.hhs.gov>

HHS emPOWER Email: empower@hhs.gov

GeoHealth Platform's Publicly Available HHS emPOWER Map 2.0 Rest Service is located at:

https://geohealth.hhs.gov/dataaccess/rest/services/CMS_DME/HHS_CMS_DME_ESRD_onlyAll/MapServer

ASPR Web: www.phe.gov

ASPR Tools & Resources—More to come!

NEW! HHS emPOWER Map 2.0 (emPOWER): <https://empowermap.hhs.gov>

ASPR's HHS GeoHealth Platform: <https://geohealth.hhs.gov/arcgis/home/>

HHS Technical Resources Assistance Center and Information Exchange (TRACIE) <https://asprtracie.hhs.gov/>